

Fabric Bits and Thread Catcher with Pin Cushion

Materials

In the main fabric :-

- One piece 17.1/2inch X 7.1/2 inch(bag)
- One piece 8 inch X 5.1/2 inch (hanging strap)
- One piece 9 inch X 6 inch (pin cushion)

Lining fabric :-

- One piece 17 1/2 inch X 7.1/2 inch(bag lining)

Plastic strapping (it comes off big packages):-

- One piece about 18 to 20 inches long. It does not matter if it over laps.

Play sand:- 300 to 350 gms to form the weight that holds the bag on the table. Polyester toy stuffing can be added if the pin cushion needs more filling out.

Insert for the pincushion

- A piece of cotton or muslin 6 inch X 8 inch tightly woven so that the sand cannot leak out.

Optional - Interlining :-

- 8 inch X 4.1/4 inch (Makes the hanging strap a little and easier for children to turn over the edges of the fabric)

Instructions

Take both main fabric and lining pieces for the bag. Fold in half so that the 7.1/2 inch sides meet and stitch them together. Press the seam open and move to the centre. This is the back of the bag. **In the main fabric only** leave open a 3/4 inch gap a 1/4 inch down from the top. This is where you feed in the strapping at the end.

Stitch across one of the open ends to form the bottom of the bag. **In the lining fabric only** leave open a 2 inch gap. See photo (a) This is for turning the bag inside out near the end.

(a)



Remember to make sure you have the opening in the back seam of the main fabric at the top.

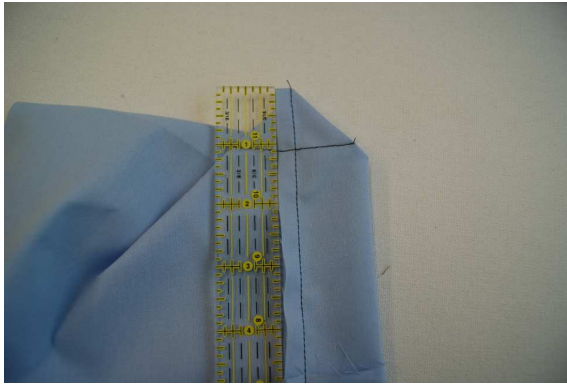
(b)



Separate the two sides and at each end of the seam fold into a triangle with it bisecting it. Then stitch a line at right angle to the seam about an inch from apex. See photos (b) and (c) This forms the flat base of the bag.



(c)



For children I draw a line 1 inch down and pinned either side of it.

Repeat this step with the main fabric outer bag to form the flat base.

(d)

Iron on the interfacing 4.1/4inch X 8 inch to the centre of the wrong side of the hanging piece of fabric (8" X 5.1/2") See photo (d)Fold over both the long sides a 1/4 inch and then again. Stitch them down.



(e)

Take the pin cushion fabric (9" X 6") and the stiffened hanging piece, place right sides together. Stitch one end of the 6 inch sides to one end of the 4.1/4 inch sides of the hanging piece. See photo (e)



(f)



Roll up the stiffened hanging piece and hold in place with a pin. See photo (f)

(g)

Fold the pin cushion fabric in half over the rolled up hanging piece. Stitch along two sides leaving the third open. See photo (g) Be careful not to stitch in the rolled up piece. Snip the one corner and turn. This is now ready for inserting the pin cushion's inside bag at the very end.



Place the pin cushion and hanging strap piece on a flat surface with the wrong side showing. Draw a line about 4.1/2 inches from the non pin cushion end and mark the centre of the line. Turn the main fabric bag to show the right side. Have the back centre seam on top then place the pin cushion and hanging strap piece on top of that. Both right sides should be showing. See photo (h) Hold them together and turn them over. Line up the centre mark with the back seam and the top of the bag with the pencil line. Stitch them together. See photo(i)

(h)



(i)



Leaving the lining of the bag inside out, place it over the outer bag so that right sides are together and the back seams line up. (The pin cushion and part of the hanging strap should be between the two bags and can not be seen.)Stitch the them together round the top of the two bags. See photos (j)and (k)

(j)



(k)



Turn to the right side through the 2 inch the cap in the base of the lining. Push the base of the lining into the base of the main bag. Press the top of the bag and stitch the two fabrics together at 3/4 inch from the top. This forms the casing for the plastic strapping. See photos (l)and (m)

(l)



(m)



(n)

Insert the plastic strapping the 3/4inch gap the back of the outside of the bag part.
See photo (n)



To make the inner pin cushion bag, fold the cotton or muslin fabric in half. You now have a rectangle 4" X 6". Machine round (set a small stitch length) leaving a 1" to 2" opening for filling it with sand. Clip the corners and turn right side out. Fill with the sand and sew up the opening with very small stitches. **Caution - Do not get sand in your sewing machine.**

Insert the inner pin cushion bag into the outer pin cushion casing and sew up the opening. The fabric bits and thread catcher with pin cushion is now ready for use.

